



YUCATÁN: THE ROUND CIRCLE

YUCATÁN: THE ROUND CIRCLE



Tailor made trip

WE ADAPT TO YOUR
JOURNEY AND GIVE
YOU OUR
ASSESSMENT

Hotels with charm

WE CONSTANTLY
CHECK THEM OUT
TO KNOW EXACTLY
WHAT WE ARE
OFFERING YOU

Travel Experience

WE EXPLORE THE
ITINERARIES IN
ORDER TO OFFER
YOU UNIQUE
ENCLAVES

Travel Safe

24 HOUR
ASSISTANCE. AMPLE
INSURANCE IN YOUR
RENT-A-CAR

OUR TRIP

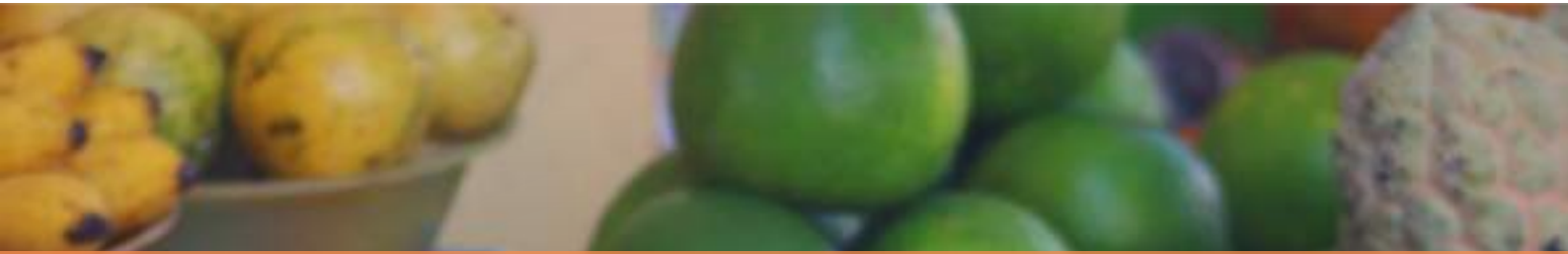
Tailor-made, according to
your likes and concerns

Exclusive accommodation

Rent a car from
the first to the last day

Always in contact with client





This Caribbean peninsula of Mexico contains an immense number of archaeological remains of the Maya Culture, some seldom visited by tourists. The Mayan language is used in quite a few remote areas that are included in this trip.

The area also has an amazing natural wealth amazing, with its tropical jungles, cenotes, National Parks and Conservation Areas, some rated as Biosphere Reserves, with the possibility of observing hundreds of species of birds, mammals, reptiles...

The Peninsula also offers colonial cities, charming small hotels, amazing Haciendas, rich gastronomy, and a tropical climate year-round.



THE ROUTE

DAY 1... WELCOME TO YUCATÁN

Upon your arrival, and after passing the customs controls, you will collect your rental car. Drive a few miles to a nearby hotel. You will have time to adjust to the country's schedule and climate.

DAY 2... EN ROUTE... RIO LAGARTOS... EK BALAM RUINS... VALLADOLID

Early departure after breakfast. First contact with the roads of region. You will be surprised by their quality of the roads and the vegetation that borders them, that enliven our path.

We deviate from the toll road before arriving in Valladolid to head north.

Our first stop will be Rio Lagartos Biosphere Reserve, on the northern coast of the peninsula. On your arrival you take a guided tour by boat with a nature guide to see the colonies of flamingos, crocodiles, and hundreds of varieties of birds... as well as mangroves and salt flats.

On our way back, we will make another stop to introduce us to the Mayan culture and archeology: Ek Balam. 30 kilometers from Valladolid and a bit off the route of mass tourism we find, emerging of the jungle, the remains of a Mayan settlement that began in 300A. C. Its well-preserved remains allows us to climb to a Mayan pyramid and view the setting from its platform. Enjoy walking along this compound, with its ruins and its jungle. Before entering the ruins, it is possible to go to a nearby Mayan Community that administers a beautiful Cenote. They also have a very simple restaurant with Yucatecan specialties. It is an experience in time, culture and gastronomy. You can bathe in the clear waters of the cenote.

After the visit, your driver will take you to the colonial city of Valladolid.





DAY 2... VALLADOLID...

Upon arrival you will be able to feel what an inland Yucatan city is like, with strong reminiscent of its colonial past. Free time to taste lunch or dinner in some restaurant or at the Donato Bates market where fruit stalls and vegetables color to your visit.

It's possible also to buy souvenirs like Yucatecan blouses with embroidered flowers, and you can try to bargain the price! Valladolid invites us to walk along its cobbled streets. The main Square, with its fountain known as "La Mestiza", is a very lively place both during the day as at nighttime.

Next to the park is the Municipal Palace where we'll see, in the top gallery, paintings with the history of the city and with excellent views of the Plaza from their balconies.

Impressive are also the two towers of the Church of San Servasio with the shield of Philip V carved in the façade.

At night the city lights up and people go out to enjoy street food stalls. Try the churros and the famous marquesitas in some of them. Taking a walk you can approach the Franciscan convent of Saint Bernardino de Siena. It is a worthwhile visit. At night there is a light and sound spectacle on its facade where the history of the place is told.

DAY 2... ACCOMMODATION IN VALLADOLID

Accommodation in one of our selected boutique hotels in the colonial center of Valladolid.



DAY 3... CHICHEN ITZA

After breakfast departure to Chichen Itza. We suggest you start very early to get ahead of the coaches that come daily from the Riviera Maya or from cruise ships that disembark in Puerto Progreso. We recommend you to be at opening time.

The city of the Itzales is the best known and most visited of the Mayan archeological sites. Its majestic Temple of Kukulcán dominates the site. The limits are marked by the Sacred Cenote to the north and the Observatory in the south. It's nice to walk around avoiding the sweltering esplanade while appreciating the Monuments.

When Francisco de Montejo fell in love with this complex, Mayan pilgrims still came to the temples, and called the complex: at the mouth of the well (Chichen) of the water sorcerers (Itza).

Three great buildings await you. The aforementioned Pyramid of Kukulcán, or The Castle, as it was called by the Spaniards. The Caracol (snail), building believed to have been used as an astronomical observatory. This building is more apart and next to it, scattered, are other buildings to visit.

The Temple of Warriors connects with the Temple of a Thousand Columns. A porticated square which served as a connection between the buildings and its market use is still being debated.

The ball game will be one of the largest you will see in the Mayan World, and you can check the acoustics of the enclosure for yourselves.

Enjoying the walk quietly touring the precinct will take a few hours.

To have lunch we recommend the porticated area of the village of Pisté where they cook wonderful local food.

After the visit and lunch, check in to the selected Mayaland Hotel & Bungalows. Free time to unwind in the pool and gardens, or to check some cenotes...



DAY 3... RELAX

Cenote Yokdzonot , Ikil o Yaxunah

*In the afternoon, free time
to rest at the chosen hotel or, our suggestion:*

*Go for a swim swim in the
Cenote Yokdzonot. A suggestive experience!*



DAY 4... EN ROUTE... MAYAPAN RUINS... HACIENDA

After breakfast, you will leave Highway 180 to the south. Here you can divert east to the village of Yaxunah, to see the remnants of Mayan ruins, as well as the cenote Lol'Ha. The fresh, clear water of Cenote Lol'Ha has created a beautiful refuge in the middle of Yaxunah. The black earth of cenotes bears a wide variety of plants that require a wetter environment and little light. For example, the "mata palo" often grows near the edge of the cenote with its long roots such as gphas reaching water level. A great variety birds like owls, swallows and the Tho bird live in the large trees nearby or in the cenote. In addition, we can find squirrels, coatís, armadillos and iguanas, which also inhabit the areas around cenotes.

Your next suggested stop will be the interesting Mayan ruins of Mayapán, of the Postclassical Period.

The walled city of Mayapán is considered to be the last great capital of Mayan culture in the Postclassic (1200-1450 AC).

It has an extension of 4 km², in which there are approximately 4,000 structures and it is believed that the city at its maximum splendor, had a population of 12,000. You can observe Chichen Itza's strong influence: an example of it is the main building or better known as Kukulcán Castle, which is the same as Chichen Itza's, only smaller. In the Central Square are located civic, administrative and religious buildings as well like the ruling class residences.

These are buildings built on foundations that have corridors with columns, temples and oratorios with an altar in the background. Also representative are the round buildings, known as observatories and small separate shrine.

After visiting Mayapán we head to the Hacienda Viva Sotuta de Peón that will be our accommodation tonight and the main protagonist of the next day. Dinner and accommodation.



DAY 5...

HACIENDA VIVA SOTUTA DE PEÓN

Breakfast at the Hacienda.

At 10:00, guided tour of this hacienda, which is one of the few that continues to produce Henequen fiber. The henequen comes from an agave-like plant, and it was this fiber that gave wealth to this whole area of haciendas, in the last half of the nineteenth century. The tour, with a guide of the estate, runs along the tracks, in a wagon pulled by a mule. First you will visit the active parts where the fiber is processed. The pleasant ride ends in a nice grotto cenote that is inside the estate, where you can have a nice relaxing swim.



DAY 5... MÉRIDA

In the afternoon, we suggest you drive to the center of Merida, about 35 kms away. Free time to discover the capital of the State of Yucatan.

Colonial city par excellence, its main monument is the impressive Cathedral of St Ildefonso that boasts be the oldest in the Americas. In its historic center it is advisable to visit the Banamex House of Culture, the craft fair, Paseo Montejo (the French style quarter), Casa Montejo, Municipal Palace (with interesting modern frescoes on the city's history and region), the Church of the Third Order of St. Francis, Church of St. John the Baptist... There are also beautiful theatres and the University with its impressive colonial building.

There are many restaurants, markets and shops. There are also product cooperatives of the region, with good quality and good prices. The streets are bustling and we recommend visiting the central market where you'll also have the possibility of eating at their stalls the best of the Yucatecan cuisine (panuchos, salbutes, lime soup, cochinita pibil among many other antojitos) In the upper area we find Mayan remains and at the end of Paseo Montejo is the Monument to the Homeland with the history of the region told in its reliefs.

A great populous and picturesque city to enjoy day and night!

At your convenience, drive back to the Hacienda. Dinner and accommodation.

DAY 6... RUTA PUUC

After breakfast we suggest an early departure, so that you can visit several archaeological sites that make up the so-called Puuc Route.

When you arrive in the area, you will visit various archaeological areas along about 100 kms. The tour is comfortable, as the Archaeological sites have abundant shade due to the vegetation. Each site has a small parking area.

You will be able to visit the most interesting sites, all far from the mass tourism, each with a special magic, surrounded by the Yucatecan forest. Highlights include Kabah, Sayil, Xlapac and Sabna. Some will take you just some minutes to visit them, but the quietness in others will invite us to contemplate them without haste.

Taking brief walks between the ruins you will spend good part of the morning.



DAY 6... UXMAL

After time for lunch, you will arrive in Uxmal where you will check-in at the hotel.

In the afternoon, we recommend visiting the caves of Xtacumbilxunna, Lol-tun Grottoes (one of the most notable in Mexico) and various cenotes. Another alternative is to go to the village of Muna with local atmosphere and gastronomy, or stay enjoying the hotel pool.

In the evening, if you want, it is possible to visit the Light and Sound night in Uxmal.



DAY 7... UXMAL

We recommend an early start to be the first to enter into the Archeological site, thus avoiding the large busloads that arrive later on in the morning... Uxmal is one of the most important sites of Maya culture. It dates from the late classical period and is in the middle of the Architectonical zon of the Puuc Culture. It has been considered a Heritage Site of the Humanity by UNESCO.

Its buildings stand out for their size and decoration. Ancient paths, called sacbes, communicate them, as well as other Mayan cities, such as Chichen Itza, Caracol and Xunantunich (Belize) and Tikal in Guatemala. Smooth walls that open to friezes ornate with representations of traditional Mayan houses. Highlights include the Pyramid of the Wizard with 5 levels, the Convent (given this name by the Spaniards), all typical Puuc architecture, the Palacio del Gobernador (one of the best examples of this architecture), the House of The Turtles, and the Great Pyramid are their most significant.

Uxmal has a magical character lost in Chichen Itza...





DAY 7... RELAX

Cenote X'batun

... Afternoon at leisure.

*If you like, you can go to the Cenote X'batun,
for a swim.*

*Managed by the local
Mayan Community, it has been filmed in several
television series and musical
videoclips, due to its amazing beauty.*



DAY 8... CAMPECHE

Breakfast. Today you will head to the western coast of the Peninsula, on your way towards Campeche.

Before you arrive at your hotel you can make a small detour to see the Malecón along the coastal gulf road, which is a bit far from the old center. Check in to the selected hotel in the colonial quarter of the city. Free time to enjoy the varied cuisine that this city has to offer.

DAY 9... CAMPECHE

Breakfast. Free day in this beautiful colonial city where we suggest a tour to get to know this beautiful Capital, declared a World Heritage Site by the Unesco.

It is one of the few walled cities in Mexico, because it was besieged by pirates for a long time, as it was a strategic port for the exchange between New Spain and the Old World.

It has beautiful sea views, and a historic center, with remains of the old wall, with its strongholds and fortified Gates.



We suggest to visit St. Francis Cathedral, in Baroque Virreinal style. Other temples are the Church of St. Roman or that of St. Juan de Dios. The main square, or Zocalo, is pleasant to walk, as well as the Markets.

There are multiple restaurants, with a wide range of local and international cuisine.

In the evening you can attend a performance at the wall that doesn't have a high cost and it's interesting, which is performed by a group of young local people.

Accommodation in the same hotel.



DAY 10... EDZNÁ...

After breakfast, you will start a route of interesting landscapes where for the first time in the tour, you will see some hills, always covered with jungle. We will also traverse multiple villages of this rural area. Suggested stop in the Archeological Zone of Edzná.

These important ruins are located 40 kms from Campeche. Its name means House of Itzaes, as it was the seat of the Itza Lineage, of Chontal origin. Founded in 400 B.C. and its heyday was in the Late Classic Period. Its architecture has traces of the Puuc culture and that of the Petén. The main square groups most of the 20 monumental buildings of the site. The archaeological site is densely forested and encompasses a large extension.



DÍA 10... HOCHOB...

After the visit to Edzná, continue on a secondary road to the little-known Mayan ruins of Hochob.

Its name means Corn Cobs we are in the Chenes Region. This area began to be inhabited from 300 AD. It is located on a hill of about 30m. His greatest splendor was reached it between 850 and 1000 AD, when most of the buildings that remain standing were built.



DAY 10... XPUJIL

Continue to the area of Xpujil, still in the state of Campeche. Accommodation in this area, In Chicanna Ecovillage or Debliz Xpujil. You will be staying here for 3 nights, as a base of operations to be able to visit the natural areas and scattered ruins of the area.





DAY 11... CALAKMUL ARCHEOLOGICAL AREA...

We suggest an early breakfast and start of the excursion of today, as the second part of access to the Calakmul ruins is a pressed dirt track. After passing the access gate we drive 60 kilometers in the middle of the jungle, so be on the look out to any animal we might observe.

This ancient Mayan city is located within the Calakmul Biosphere Reserve, which has more 723,000 hectares and is the largest of the five natural protected areas of the State of Campeche. In the Calakmul Biosphere Reserve you can find 5 of the 6 species of felines recorded in Mexico: Yaguarundi or leoncillo, Tigrillo or margay, Ocelote, Puma and jaguar. In addition, there are 235 species of birds, 76% of which are residents and 24% are migrants, or residents in summer or winter. Listening to howler monkeys is by itself a show.

The archaeological site of Calakmul was inscribed by the UNESCO in 2002 as a Cultural Heritage Site. The 6,000 structures that make up the the city's remains encompass a space of about 70 square kilometers. The monumental area comprises about two square kilometers and has about a thousand structures.

You are in one of the most important cities in Mayan civilization, both by extension and by population, as it reached more than 50,000 Inhabitants.

. The city's timeline dates back to the Preclassic Period (300 BC - 250 BC), while its moment of splendor takes place in the Classic Period when the Kingdom of Kaan allied with other states in a Confederation called Cuchcabal. It became known as the Kingdom of the Snake, main rival of Tikal (Guatemala), with whom the hegemony of the Central Mayan was disputed. Calakmul is located in a northern portion of the Petén, sharing not only the same flora, fauna and orography, but also its same Architectural style Only the main core of the pre-Hispanic vestiges is located on a natural dome of approximately 25 square kilometers, surrounded by water and canals made by the the Maya to store water, as each rain season the lower parts flooded.

Evidently, this archaeological site and its fascinating natural frame takes quite a bit of time to visit.





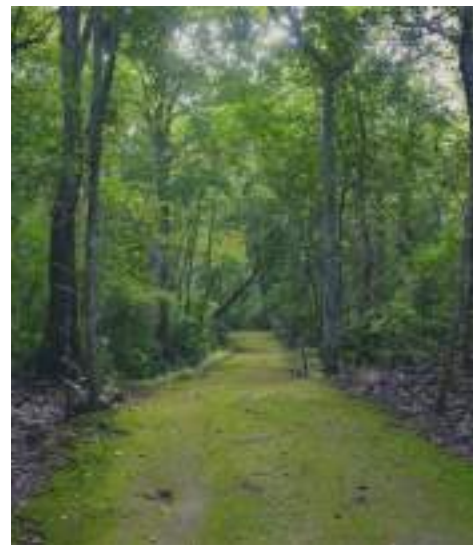
DAY 11... BALAMKU...

If you feel like seeing more ruins, on your way back, you can make a small detour to visit the Archaeological Zone of Balamku. This Mayan city that encompasses just one square kilometer, is famous for s the "Frieze of the Universe," an archaeological polychrome stucco. It is unique in the area with engravings stylized and interspersed with jaguars, snakes and a saurio.

This structure includes four scenes that refer to the order of the Universe and opposing aspects complementary to the Underworld. Each representation shows an animal with the head turned back. Masks (stone face) and jaguars express conceptual wealth of the Earth, and amphibians ensure transition between two worlds.

DAY 11... XPUJIL

After this intense day, drive back to your hotel in Xpujil. You will find several local restaurants in this area.



DAY 12... ARCHEOLOGICAL AREAS: HORMIGUERO...

Breakfast at the hotel. First we suggest you head towards the border with Guatemala. Just 20 kilometers away we find the Archaeological area of Hormiguero. It is in full study and they are discovering new areas. Although known since the 1930s archeological excavations only began in the 80s.

Today, a promising development of the new discoveries awaits. Your visit will be limited to the few buildings that are being restored. As they are far off the tourist routes, this is once again an advantage, to be able to visit them at your own pace. The most important building is a building has its façade divided into three, in the center a large mask flanked by corner towers rounded with simulated steps. The mask presents, as an entrance to the Temple, a monstrous mouth opening his jaws, so it has been interpreted as a threshold between the outside world and the Underworld.



DAY 12... ARCHEOLOGICAL AREAS: BECAN...

The Site of Becan is also interesting. You will access the Monumental Area through a tunnel. The traces of its buildings and plazas give an idea of the complexity of this city...



DAY 12... ARCHEOLOGICAL AREAS: CHICANÁ...

We also recommend a short visit to Chicaná Ruins. It also holds representative remains of the Architecture of this area. You will once again find a large mask, door to the Underworld. It is well conserved.

DAY 12... ARCHEOLOGICAL AREAS: XPUJIL...

The village of Xpujil, where you are staying, also has an Archeological Site. It is rather small, so the visit to the structures and pyramids is easy and, as you will very probably be on your own, you can climb up to some of the pyramids and admire the views of the tropical jungle. Return to your hotel. Accommodation.



DAY 13... DZIBANCHE...

Breakfast at the hotel and depart to the ruins of Dzibanché. It is possible that we will be the only visitors, as these ruins, like Kohulnich, are far away from the tourist routes.

The Dzibanché - Kinichná complex is located in a transition zone between the low northern jungle of the Yucatan Peninsula and the rainforest of Petén. The settlement occupies an area of more than 40 km² and consists of four monumental architectural groups: Dzibanché or Main Group, Lamay Complex, Tutil and Kinichná Group. These groups had specific functions, interconnected by Sacbés or White Mayan roads.

It is possible to observe the Petén style, style that was replaced in the mid-Classical (approx. 600 A.D.), by temples with facades decorated with paired pilasters, characteristics belonging to a local style, associated with the Kaan dynasty, which was established at the site during the Early Classic Period. The existence of hieroglyphic texts engraved on the monuments of the Cautivos Temple Staircase and findings of sumptuous offerings in funeral chambers, denote that Dzibanche was involved in the conquest of other cities, by several rulers of the Kaan Family, for more than two centuries.



DAY 13... KOHUNLICH...

After this visit, continue to Kohulnich. The name Kohunlich derives from the name Cohoonridge that Belizean workers gave to a timber camp, which was in the area in 20 and 30s of the 20th century. Derived from the terms English cohoon (corozo, a type of palm tree common in this area) and ridge (lomerío). It is a fascinating archaeological area both for its history and for its aesthetics and the natural beauty that frames it. It is estimated that it started as a hamlet around 200 B.C. With the years, it gained power and grew in dimensions. Between the years 500 and 600 AD; the Temple of the Masks was built, which today is Kohunlich's most famous structure and perhaps the most emblematic of the state of Quintana Roo.



DAY 13... LAGUNA BACALAR

Then continue to Bacalar, where accommodation will be provided in a boutique style hotel in the center of the village, or in the lake.





DAY 14...

LAGUNA BACALAR

Breakfast at the hotel. We suggest a navigation with naturalist guide in this natural lake, touring its different areas. The name in Maya, "Sian Ka'an Bakh'alal" again means "place where heaven is born", and when you contemplate it, you will understand. This large lake, also called "of the seven colors" where a beautiful wildlife makes this a very special place. The combination of fine white sands along with the crystal clear water give great beauty to the whole landscape. The place currently has a Protected area with a total of 52,000 hectares, and it includes cenotes and mangroves that serve as a habitat for many colorful species of birds, fish and many unique animals that preserve the beautiful biodiversity of the place. Rest of the day free, to continue enjoying the lagoon. A nice suggestion is to visit Areat of Stromatolites is by renting a kayak. Also, a short distance away, is the great Cenote Azul. This cenote is the classic open, round cenote, surrounded by lush green vegetation. Divers like it due to its considerable depth. Accommodation in the same hotel.





DAY 15... EN ROUTE...

CHACCHOBEN ARCHEOLOGICAL AREA...

After breakfast set out on your way northbound, to the lesser known Chacchoben Ruins. It is the most important settlement detected to the date in the Lake Region, whose occupation commenced 300 years before our era. It is thought the layout had small hamlets around the permanent freshwater bodies in the region. Based on the research conducted to date, it is assumed that it was during the early years of the Early classic (250 A.D.) when the urban tracing that is preserved today was laid out, that the construction of most of the structures that make up the core of the settlement, comprising around 70 hectares. You will find remains of buildings of public nature with different civic, religious and administrative functions. Built in its early stages under the Peten Style, the site continued its growth and development for an additional 500 years, developing the architectural style that characterizes it, with traces of Rio Bec and Chenes styles, possibly due to its strategic location.

DAY 15... RIVIERA MAYA

After the visit, we continue again north towards the Riviera Maya. The accommodations we like in this area are located about 15-20 kms south Tulum, in an area of very nice beaches. We also have a selection of boutique hotels or small all inclusive resorts in other points of the coast. On any of the routes you will find tourist attractions where to stop us and always the road offers you some surprises that don't figure in the guides.

Upon your arrival at the hotel and after check-in you have time to enjoy the beach.

DAY 16 TO 18... RIVIERA MAYA

During these days, you have your rental car, which can be parked in the assigned areas of the hotel; The excursions and visits we suggest can be in regular tours, but if you prefer, you can go on your own:

The beautiful Mayan ruins of Tulum, which stun us by its location in front of the turquoise Caribbean waters. The ruins of Coba, increasingly incorporated into the sightseeing tours. Or visit the biosphere reserve of Sian kaán. Several water parks, jungle parks, etc., also offer interesting alternatives, mostly if you plan to travel with kids. We have the second largest coral reef of the world, aligned with the whole coast. There are dozens of alternatives for divers and snorkelers.

DAY 19... RIVIERA MAYA... CANCÚN AIRPORT

Drive back to Cancún airport. You will return the car at the airport rental car facilities and then take their shuttle to your Terminal, considering sufficient time to check in following all the safety procedures.

FIN DE NUESTROS SERVICIOS



CONTENTS

INCLUSIONS

- 1** RENTAL CAR ACCORDING TO YOUR NEEDS, WITH UNLIMITED MILEAGE AND FULL INSURANCE WITH FRANCHISE CERO
- 2** 14 NIGHTS BREAKFAST & ACCOMMODATION DURING THE ROUTE
- 3** 4 NIGHTS IN THE COAST, IN THE SELECTED FOOD REGIME
- 4** DETAILED MAP OF THE ROUTE, WITH SUGGESTIONS AND RECOMMENDATIONS

ACCOMMODATION

- 1** HOTEL NEAR THE AIRPORT OR IN DOWNTOWN CANCÚN
- 2** VALLADOLID HOTEL BOUTIQUE SAASTA OR SIMILAR
- 3** VILLAS ARQUEOLÓGICAS HOTEL & BUNGALOWS MAYALAND OR SIMILAR IN CHICHEN ITZA
- 4** HACIENDA VIVA SOTUTA DE PEÓN OR SIMILAR
- 5** HACIENDA UXMAL OR SIMILAR IN UXMAL
- 6** CAMPECHE SIR FRANCIS DRAKE, DON GUSTAVO OR SIMILAR
- 7** CHICANNA ECOVILLAGE OR DEBLIZ XPUJIL IN CALAKMUL AREA
- 8** TOTO BLUE BOUTIQUE HOTEL, RANCHO ENCANTADO OR SIMILAR IN BACALAR

- 9** LA NUEVA VIDA DE RAMIRO, ZEBRA, DREAMS TULUM IN TULUM, ESENCIA, ÚNICO, HYATT, BELMOND... IN THE CHOSEN POINT OF THE RIVIERA MAYA

NOTES

- 1** THIS ROUTE IS A SAMPLE AND CAN BE ADJUSTED TO YOUR PERSONAL CHOICE
- 2** THE ROADS ARE GENERALLY IN A VERY GOOD STATE, AND THERE ARE PLENTY OF GASOLINE STATIONS IN THE WHOLE ROUTE
- 3** THE COST OF THE ENTRANCE FEES TO MOST RUINS IS VERY REASONABLE, AS ARE THE TOLLS ON SOME ROADS



el otro
YUCATAN

WWW.ELOTROYUCATAN.COM